

What will you do with it?

Chris Burkett

Va Dept. of Game and Inland Fisheries

Sept. 29, 2015

# While I Am Here...

I want to talk about contentious data issues:

- How we refer to wildlife;
- Distribution Maps; and
- Terrestrial Habitats.

Wrap up with observations and techniques that help us do things better.



# New Technology and New Terminology

- Historically, agencies managed at species level.
- New technologies changed the rules.
  - DNA, telemetry, remote sensing, GIS

Genetic and behavioral distinctions lead to finer subdivisions:

- Sub-species and Sub-sub-species
- Races
- Distinct Populations
- Designation of new species



Wyoming Toad:  
*Bufo hemiophrys baxteri*  
to  
*Anaxyrus baxteri*

# Is More Detail Helpful?



## The Case of the Willet:

- Suggested to be added to Virginia's Action Plan
- Two "races" identified – Eastern and Western
- Requested that each race be prioritized differently
  - In essence, manage this bird as two species

# What Do You Want People to Do?

## Threats:

Loss and degradation of barrier island and coastal wetland habitats.

The “Race” of the birds had no bearing on the prescribed conservation actions.

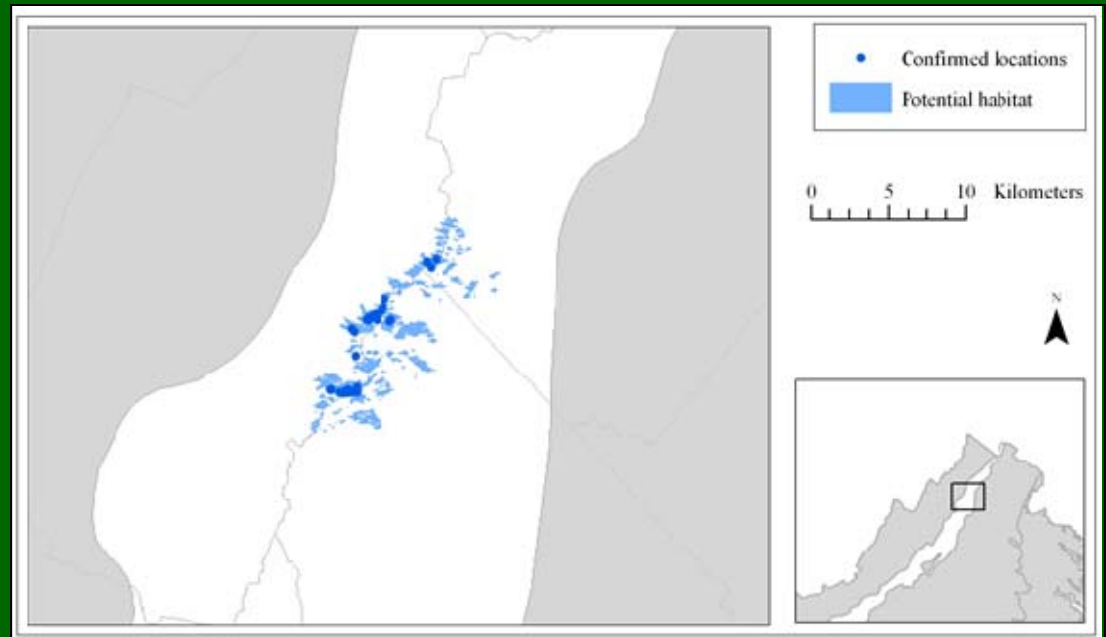
- Would add confusion without utility



# Species Distribution Maps

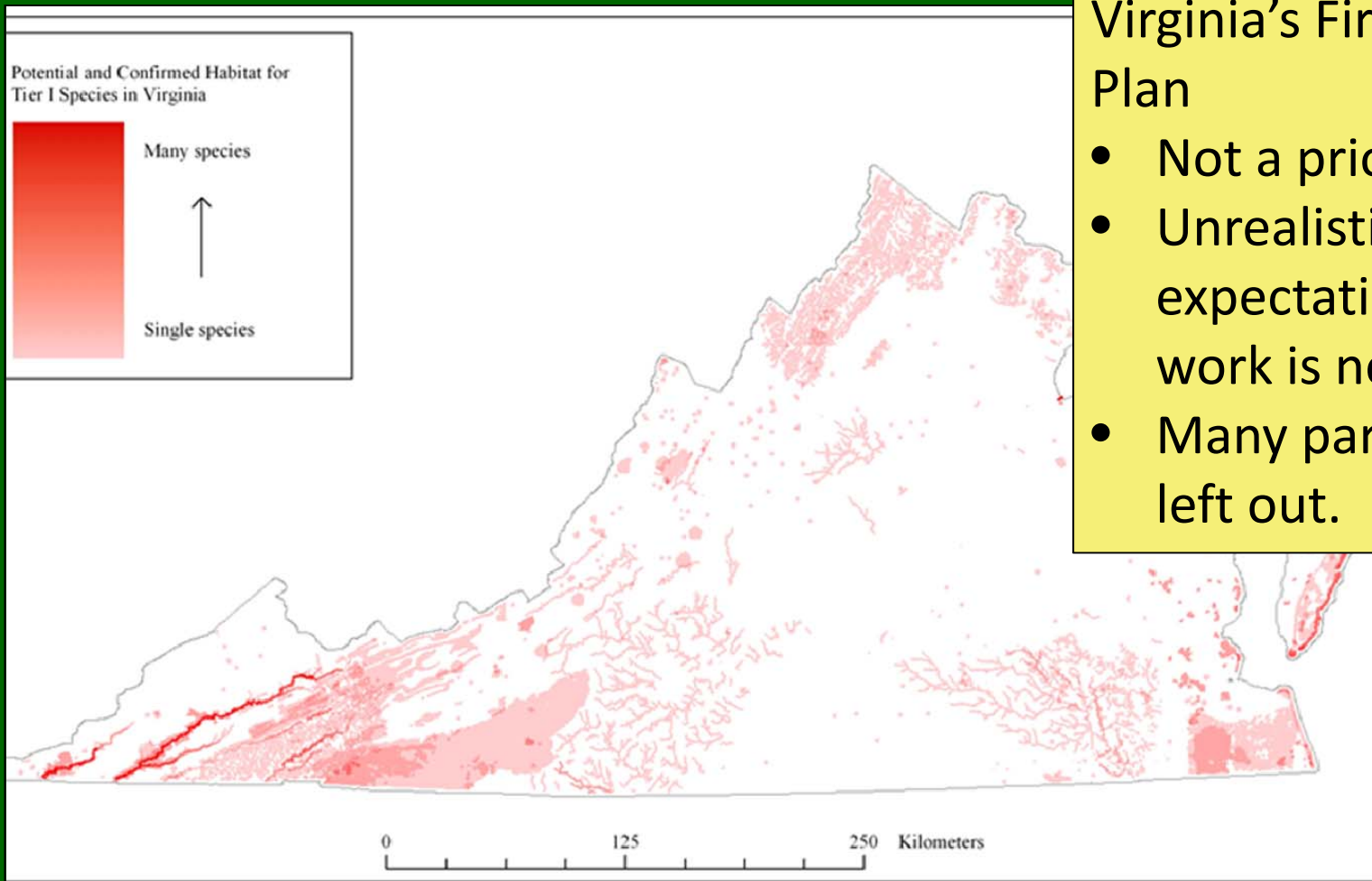
In Virginia's 2005 Plan the authors wanted to include species distribution maps

- Where species occur;
- Where actions would be implemented;
- Where to monitor.





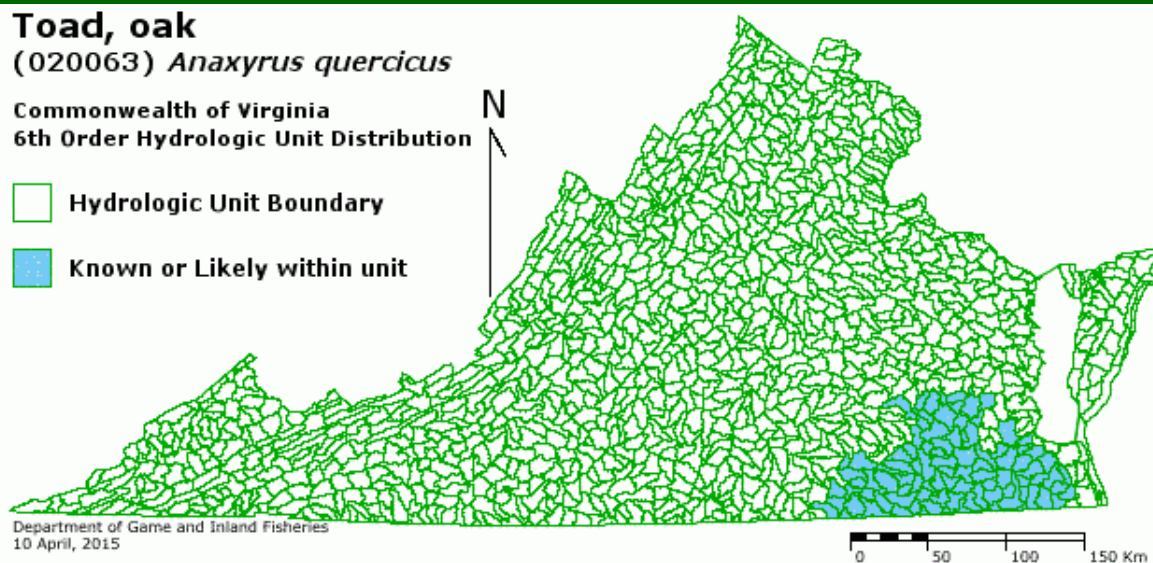
# Maps Compiled



## Most Prominent Map in Virginia's First Action Plan

- Not a priority map.
- Unrealistic expectations of where work is needed.
- Many partners felt left out.

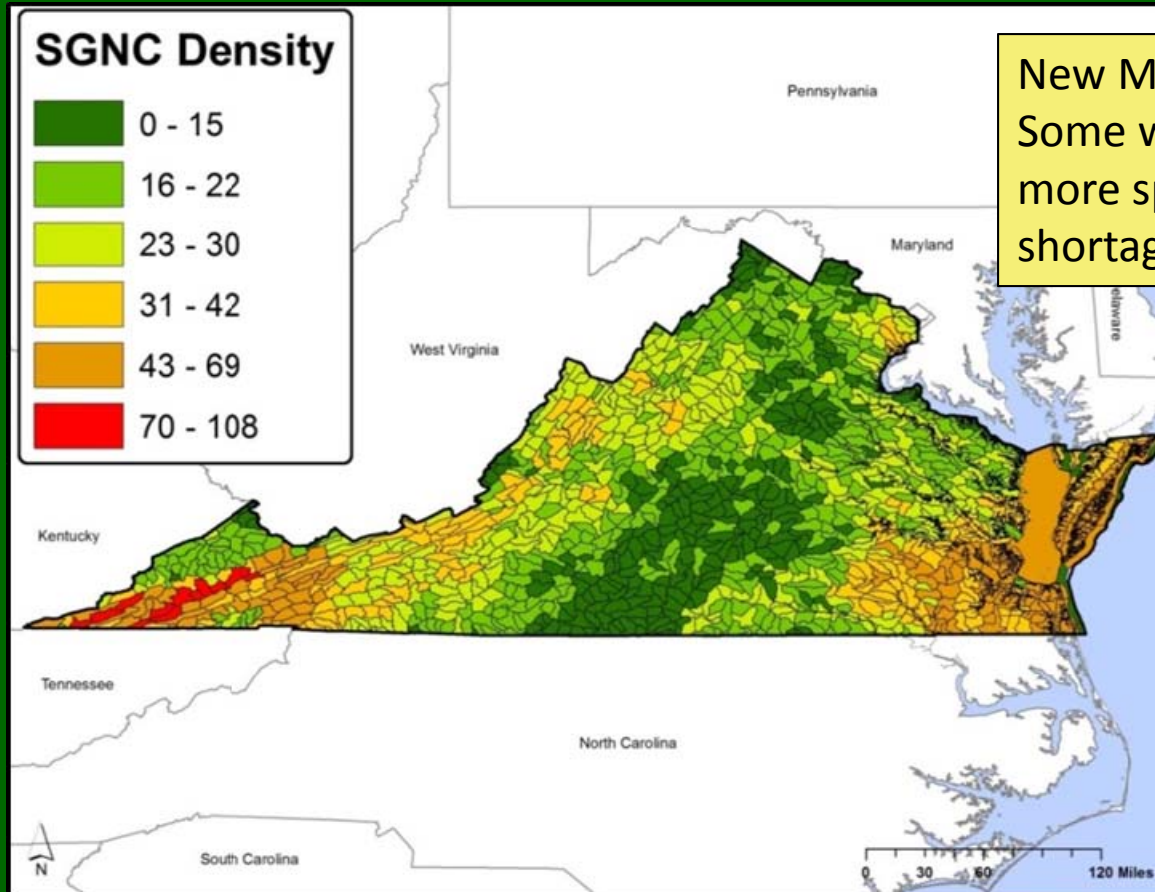
# Switched Gears



- More species w/ common mapping unit
- Best presentation with limited data
- At a scale to direct actions
- Hinder collections
- Not threatening to landowners



# New Maps Compiled



**New Messages:**  
Some watersheds provide habitat for more species than others but no shortage of conservation opportunities.

# Terrestrial Habitats

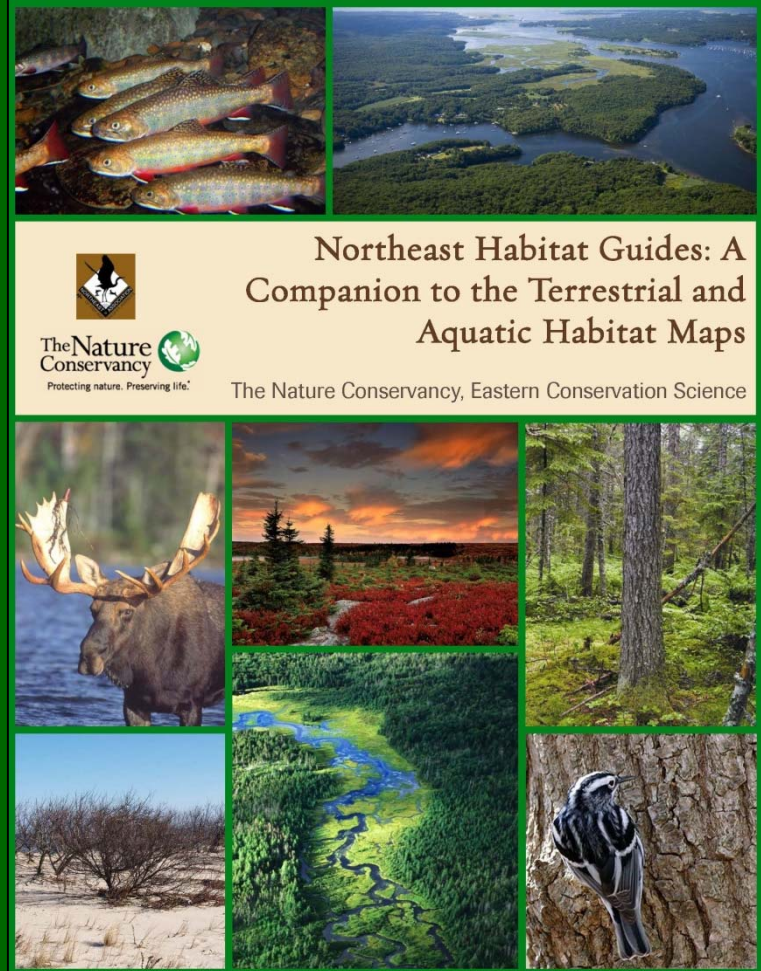
2015 Action Plan taking a more habitat-oriented approach.

- Address most problematic issues,
- Benefits multiple species, and
- Benefits people.



# Northeast Terrestrial Habitat Model

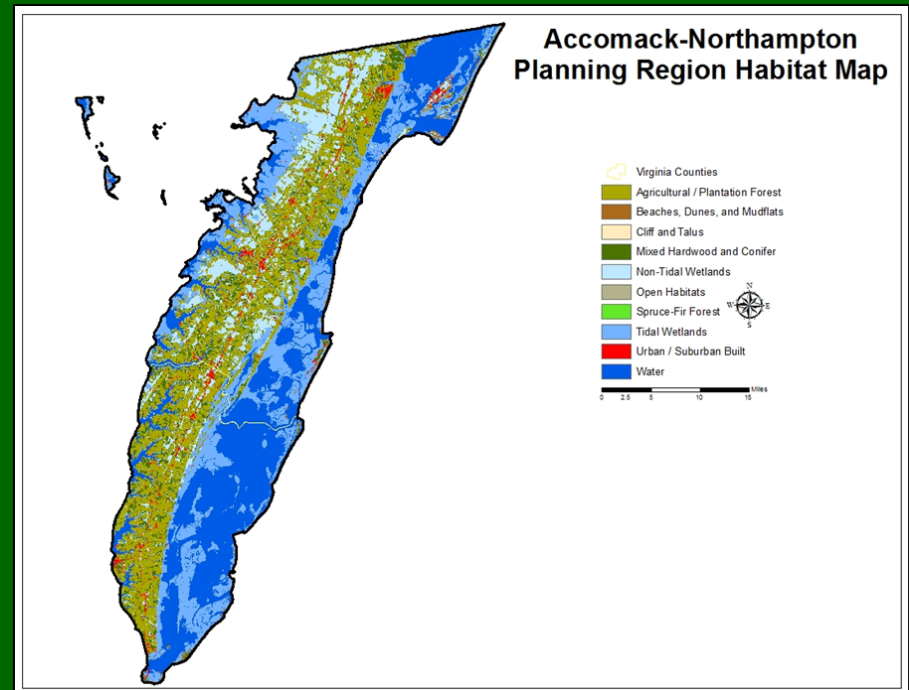
Northeast Association members have collaborated on issues to advance implementation of the Action Plans



# Our Modified Maps

## Challenges Remain:

- Retain connection to other NE states;
- Sister agencies and DGIF programs have their own maps;
- Remains to be seen how this model influences local land use planners





# The Simplicity at the Far Side of Complexity

Quote from Nick Salafsky (Foundations of Success)

People always gravitate to the complex, trying to fit everything in. And they build something monstrous. Then they find that is cumbersome and may not work particularly well. Then they streamline and boil it down to its essence.

How does   (noun)   help us keep species from becoming endangered?

# An Uncomfortable Question

- Often Confrontational
- Challenges Expertise
- Sets a standard that the planner must be prepared to live with.



THE SPANISH INQUISITION

Just when you least expect them.



# A Platitude...

“Begin with the end in mind.”

Stephen R. Covey

The 7 Habits of Highly Effective People

What are you going to do with it?



## A Handy Tip...

Every good cooking show includes a handy tip – something you can use to achieve success.



# Napoleon's Idiot



A facilitation technique to help you condense your ideas.

- Find someone you trust to tell you the truth.
- Explain what you are working to accomplish.
- Have them explain it back to you.
- If they can't, then you need to condense the idea.
- (You will want to call this something else)

# Thank You



Chris Burkett  
Wildlife Action Plan Coordinator  
Virginia Department of Game and  
Inland Fisheries  
7870 Villa Park Drive, Suite 400  
Henrico, VA 23228  
804-367-9717  
[Chris.Burkett@dgif.virginia.gov](mailto:Chris.Burkett@dgif.virginia.gov)